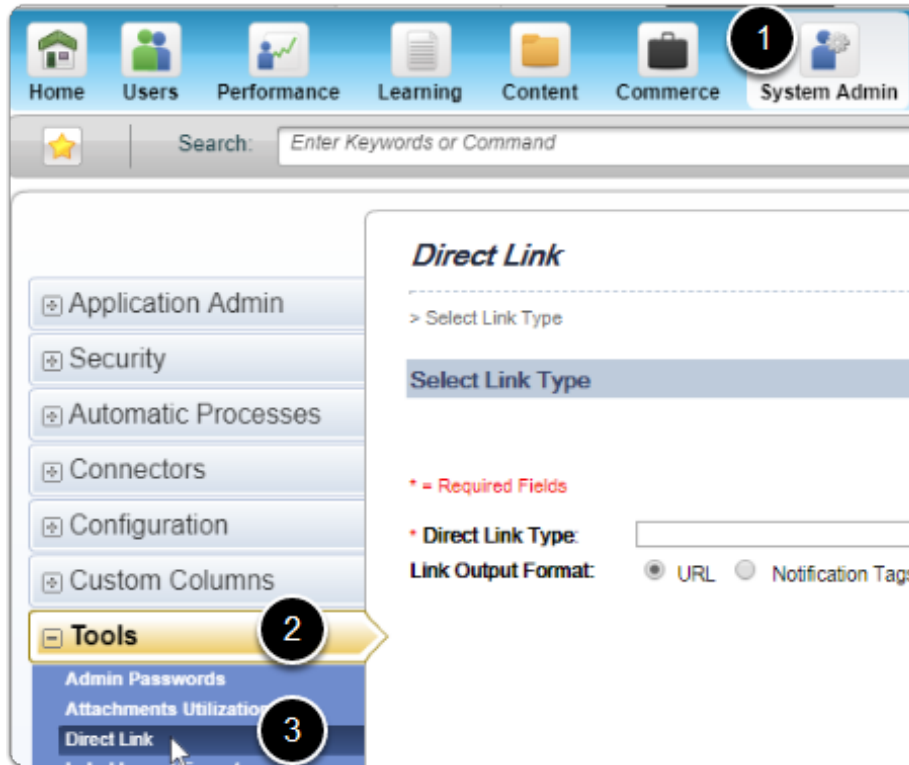
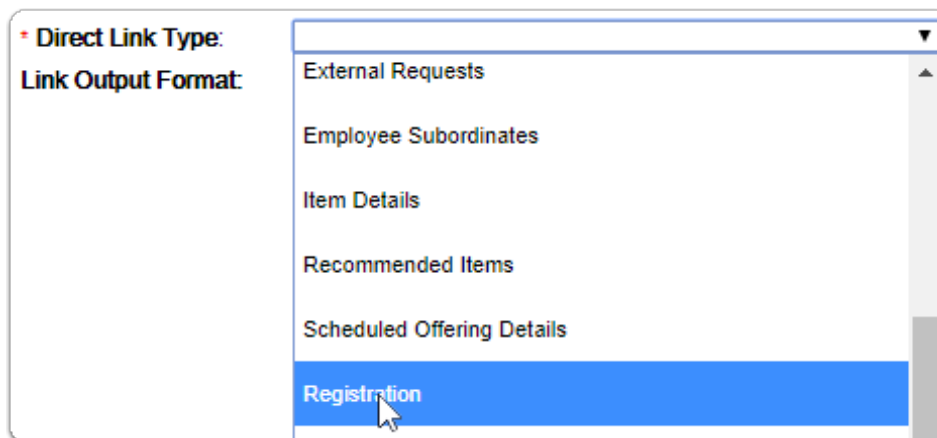


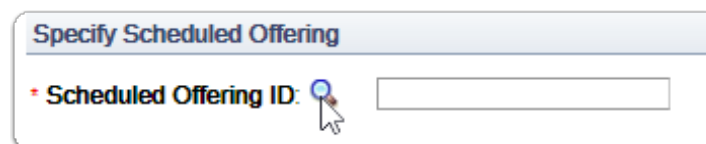
## 1. Start at System Admin and select Tools. Click Direct Link



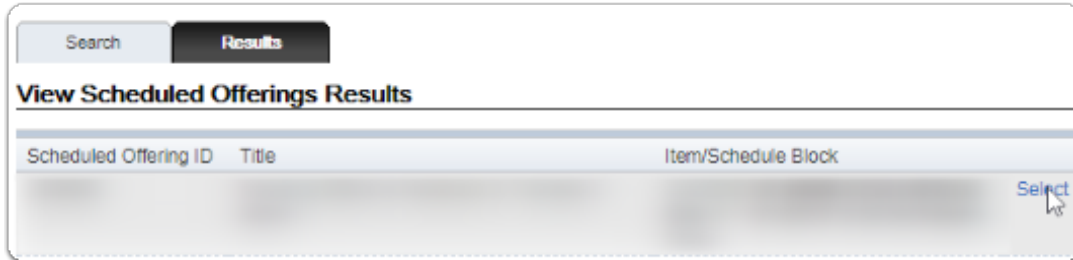
## 2. Pick the type of link you need from the drop-down menu



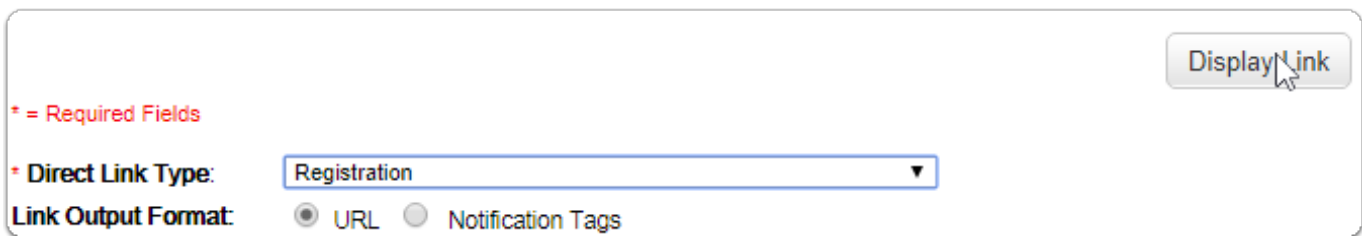
## 3. Use the magnifying glass to search for your item or scheduled offering.



## 4. Select your item or scheduled offering.



## 5. Select Direct Link



The screenshot shows a form for configuring a direct link. It includes a 'Display Link' button in the top right corner. Below the button, there is a red asterisk followed by the text '= Required Fields'. The form contains two main sections: 'Direct Link Type:' with a dropdown menu set to 'Registration', and 'Link Output Format:' with two radio buttons: 'URL' (which is selected) and 'Notification Tags'.

## 6. Copy your Direct Link

